

For Optimal Hand Hygiene, Avoid:

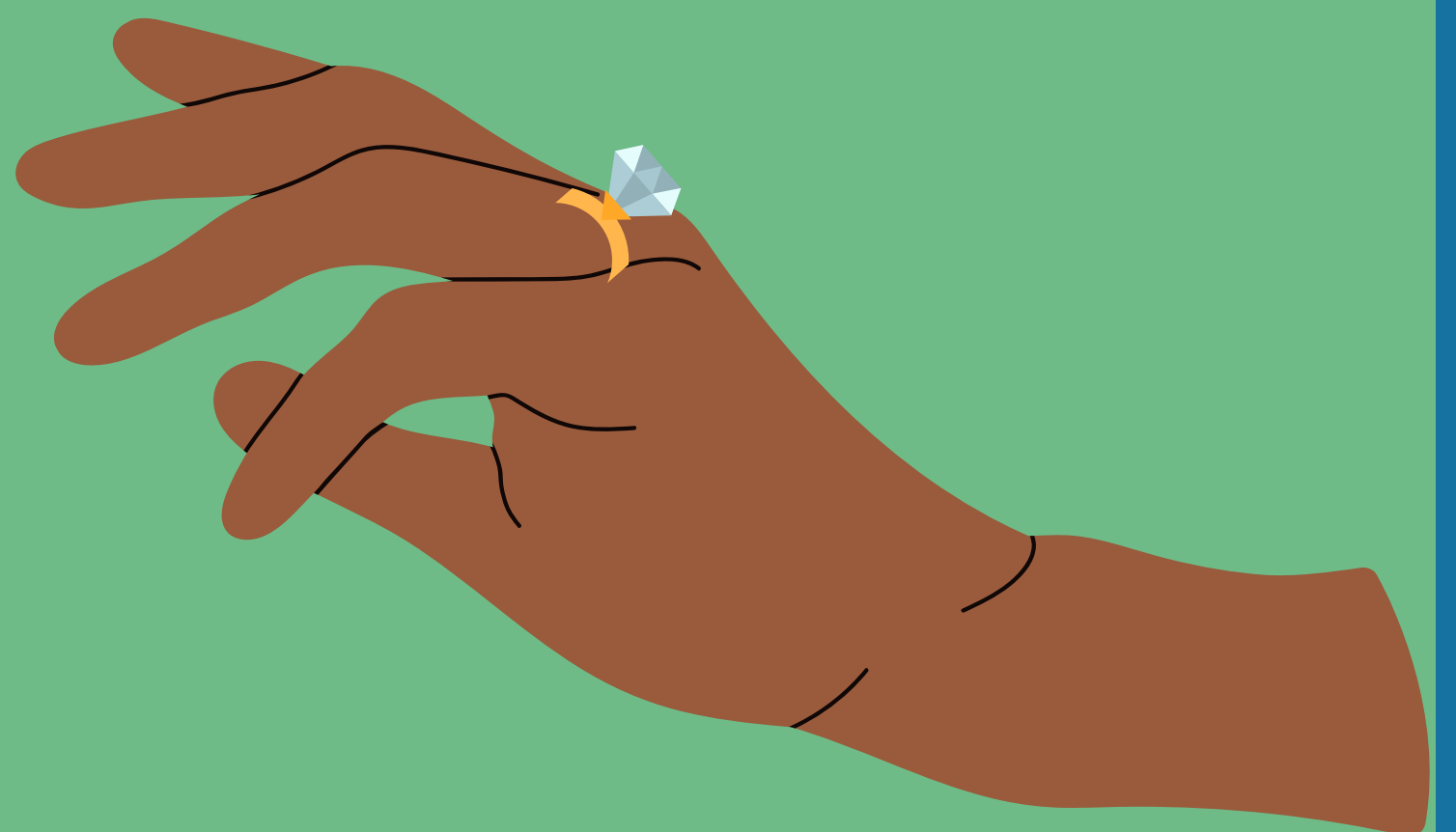
Wrist Jewelry

Wrist jewelry/accessories should be removed or pushed up above the wrist so as not to impede hand hygiene.



Rings

Rings should not be worn, with the exception of a single smooth band without projections or mounted stones.



Nail Adornments

Nails must be short, clean, and free of nail art/enhancements. Nail polish, including gel polish, should not be worn.



Watches/ Smart Watches

Sleeves and watches should be moved up past the wrist. Non-porous and easy to clean watch bands are recommended.

